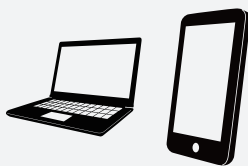


# "THE FRINGE JAPAN PROJECT"

## 1. REGISTRATION



Place & Artists



Web



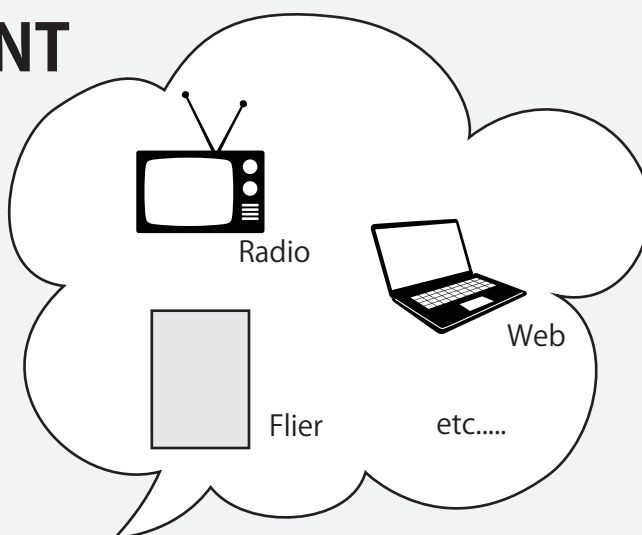
Fringe Office

Venues and artists can submit the details of any events during the festival period to the Fringe Japan Project website. The site is accessible from smartphones.

## 2. ADVERTISEMENT



Fringe Office



Based on the collected data the Fringe Office advertises using fliers, posters, radio and TV.

## 3. HOLDING



Event Space

Fringe Office

Event Space

During the festival artists and events are busy throughout the town. Every night there is a "Puchi Fringe" club where artists can advertise their events by performing for 15 minutes.

